

# Online Evaluation and Evidence Toolkits

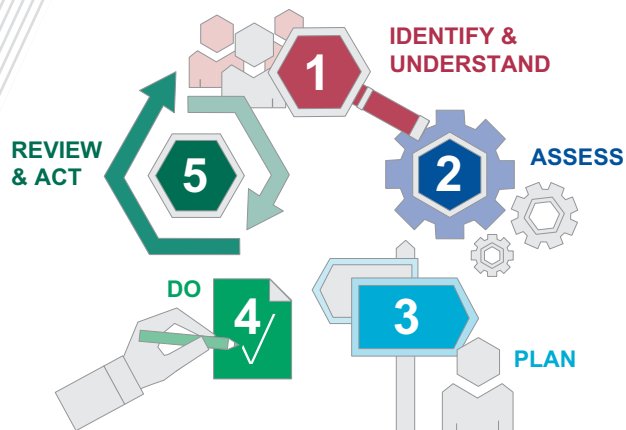
Supporting evidence-informed patient care

## Evaluation Works

### Helping you to...

- ✓ Improve services and outcomes
- ✓ Determine value and effectiveness
- ✓ Make informed decisions

Evaluation Works will allow you to build appropriate evaluation into the commissioning cycle, in turn improving the quality of care and outcomes for patients.



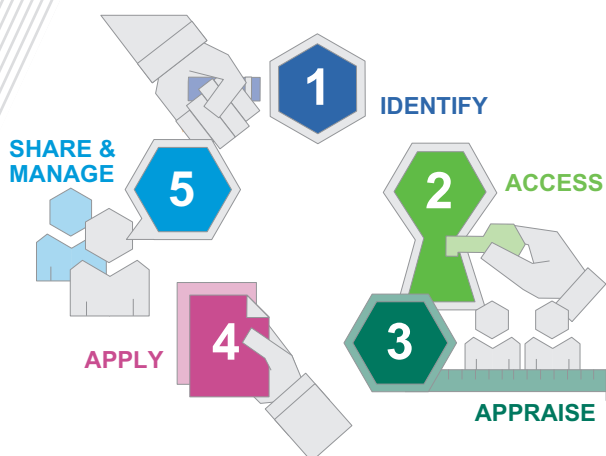
✓ [www.nhsevaluationtoolkit.net](http://www.nhsevaluationtoolkit.net)

## Evidence Works

### Your complete guide to...

- ✓ Finding
- ✓ Appraising
- ✓ Applying evidence

Evidence Works will help you to successfully provide evidence-informed commissioning in your decision making for new and existing services.



✓ [www.nhsevidencetoolkit.net](http://www.nhsevidencetoolkit.net)

in association with



For toolkit training in your area, contact:

**Jo Bangoura on**  
[j.bangoura@nhs.net](mailto:j.bangoura@nhs.net)