

# Voluntary, Community, Faith and Social Enterprise (VCFSE) Partnership for better health



Nigel Harris, Director of Innovation and Growth

[nigel.harris7@nhs.net](mailto:nigel.harris7@nhs.net)

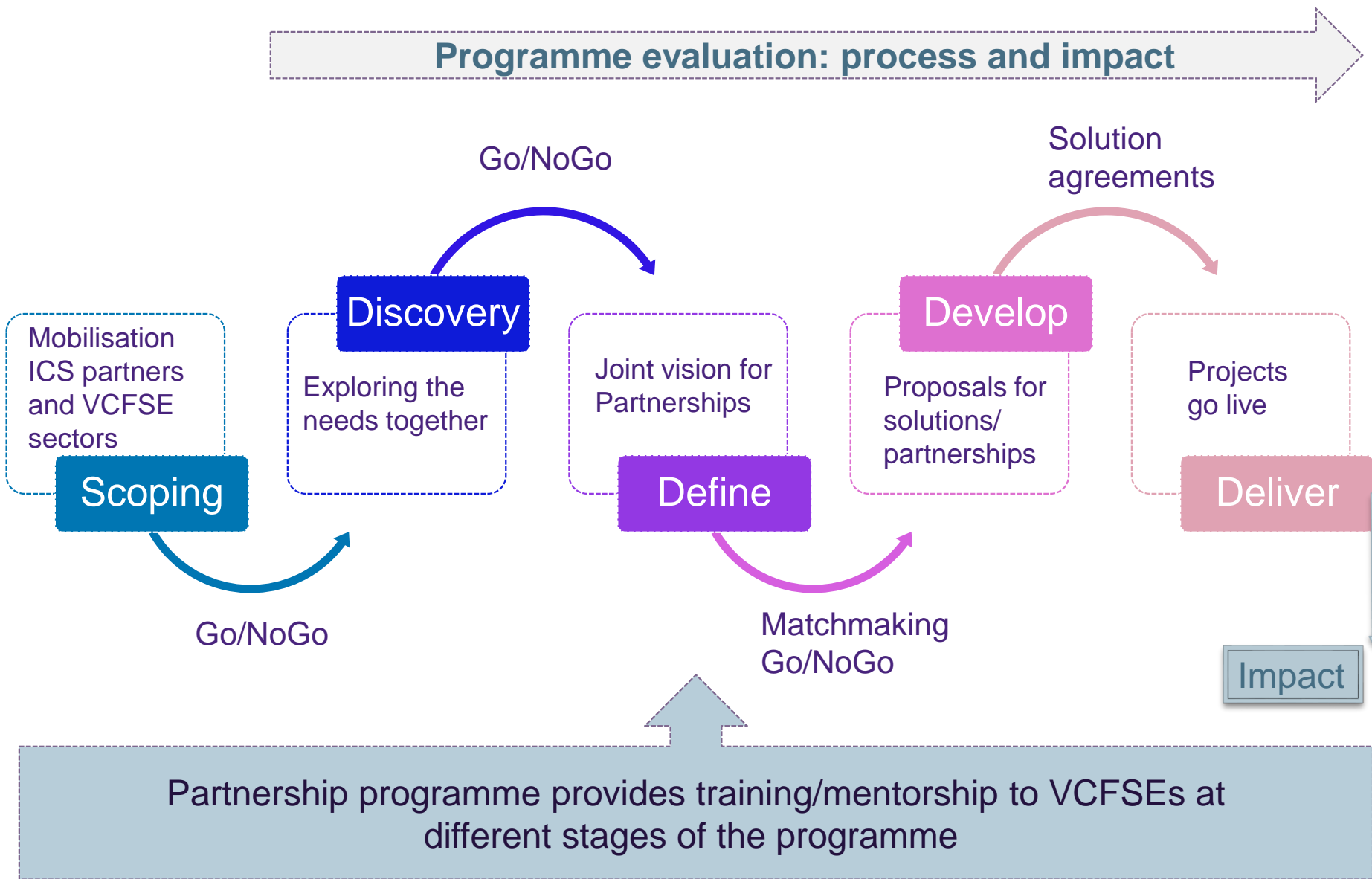
Urszula Kapoulas, Senior Project Manager

[urszula.kapoulas@nhs.net](mailto:urszula.kapoulas@nhs.net)

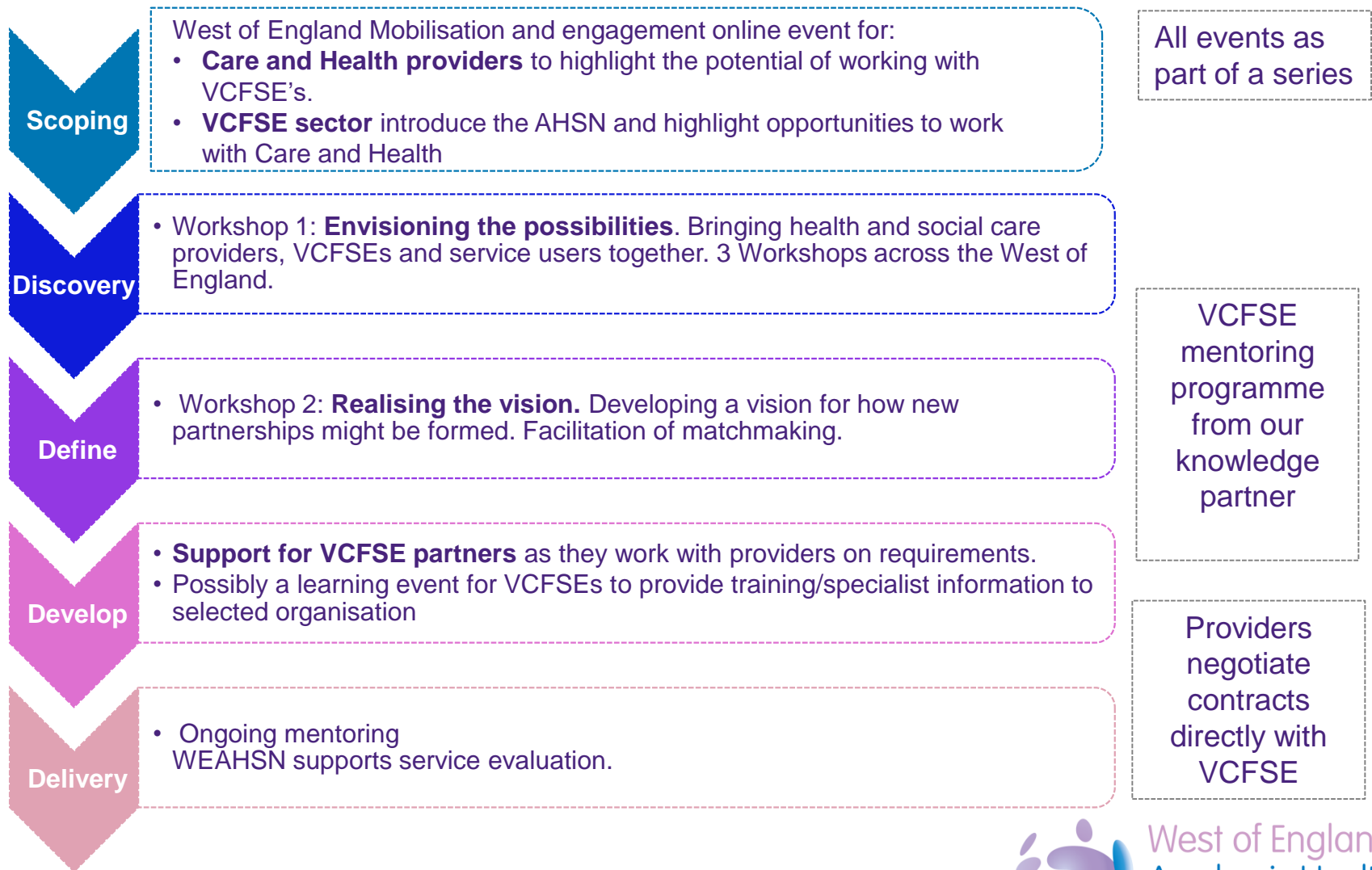
# VCFSE Partnership for better health – Aims

- 1. To bring together Care and Health providers and VCFSE's** to discover new opportunities to work together.  
Focus on place based and community of interest VCFSEs and start-ups  
Challenge Care and Health providers to 'think outside the box' to improve health and wellbeing outcomes
- 2. To provide a supportive environment** that will enable community organisations to develop new relationships; maximising the input from the lead VCFSE locality partners
- 3. Access to advice, training and mentoring** to VCFSE's to nurture and support partnership working
- 4. Facilitate the development of new approaches to contracting** between VCFSEs and Care and Health providers
- 5. Assist with developing an evaluation framework** to monitor effectiveness of any new VCFSE & provider partnerships

# Programme methodology



# Programme structure





West of England  
Academic Health  
Science Network

[www.weahsn.net](http://www.weahsn.net)

