

BSW ICS NHSX SCALING UP

IMPROVING REMOTE MONITORING OF RESIDENTS IN CARE HOMES

BSW/WEST OF ENGLAND AHSN PROJECT TEAM

Role

Programme Management
Project Manager
IG specialist
Change Analyst
Clinical Lead (GP)
Technical Lead
RA & Training
Clinical transformation- frailty
Clinical transformation- care home
Analyst
Other requirements

WTE

0.4
1
Commission to support 20-25 homes
1
0.2
0.4
Commission to support 20-25 homes
0.2
0.2
0.5
PCN/Homes backfill, comms, benefits

PHASE 1

INFORMATION GOVERNANCE

Support Care Home to achieve DSPT
'Standards Met'
(Pre requisite of Technical)

PHASE 2

TECHNICAL

SystemOne environment set up,
software installed
Staff trained and able to access

PHASE 3

TRANSFORMATION

New ways of working co-developed with
PCN/Home
Platform for remote monitoring

APPROACH

To implement the SystemOne (TPP) Internet First module to nursing/care homes in BaNES, Swindon & Wiltshire (BSW) with a focus on simplicity using four main elements:

- Remote Monitoring via recording of information e.g. Observations
- Viewing of Information
- Improved Communication
- Medications

This is to improve communication with health services, increase efficiencies around information sharing, empower residents, and enable care home staff to provide the most appropriate, individualised care.

48



Number of Care Homes on shortlist

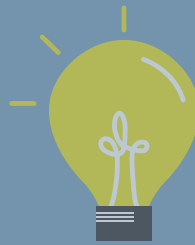


20

Number of Care Homes we are aiming to deploy to by end of quarter 4



Ease of access, custom TPP dashboard provided to consolidate frequently accessed information and quick links for communication and data entry



Future plans to develop additional functionality to simplify:

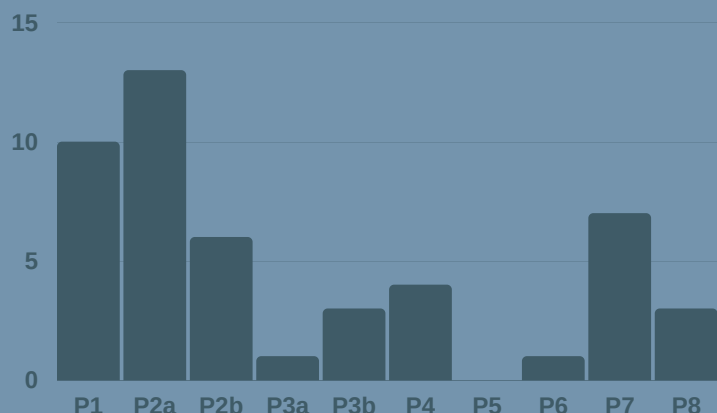
- TEP/EOL Data Entry
- TPP Eobs application
- Shared Rotas
- Automation



We have created a 'menu' of changes that Care Homes (working with their GPs) can use to help identify processes and changes to implement

PRIORITISATION & ENGAGEMENT

- P1 Care Home Live has Standards Met
- P2a PCN Engaged / Care Home has Standards Met
- P2b PCN Engaged / Care Home doesn't have Standards Met
- P2c Care Home Live - No DSPT
- P3a Practice & Home engaged but not wider PCN / has Standards Met
- P3b Practice & Home engaged but not wider PCN / doesn't have standards Met
- P4 Home is engaged / has Standards Met
- P5 Homes with high admissions & ambulance calls / has Standards Met
- P6 Homes with Standards Met but no contact made
- P7 Home is engaged / doesn't have Standards Met
- P8 Moved to out of scope (for now)



POTENTIAL BENEFITS

- Facilitate remote monitoring by allowing recording of observations which can be viewed by other healthcare professionals (e.g. NEWS2 score)
- A reduced need to contact GPs and other NHS healthcare professionals due to the direct access to clinical records
- The ability to directly message GPs rather than rely on telephone contact through the practice switchboard
- More efficient ordering of medications for residents
- Access to discharge summaries when a resident leaves hospital including up to date information for medicines

"TPP SystemOne is easy to use and provides a digital tool that enables the care home nurse to contact the GP with questions/queries regarding the residents past medical history, requesting medications or communicating concerns about a resident, this will save so much time and improve quality of care."
Sian Davies - Carehome Nurse